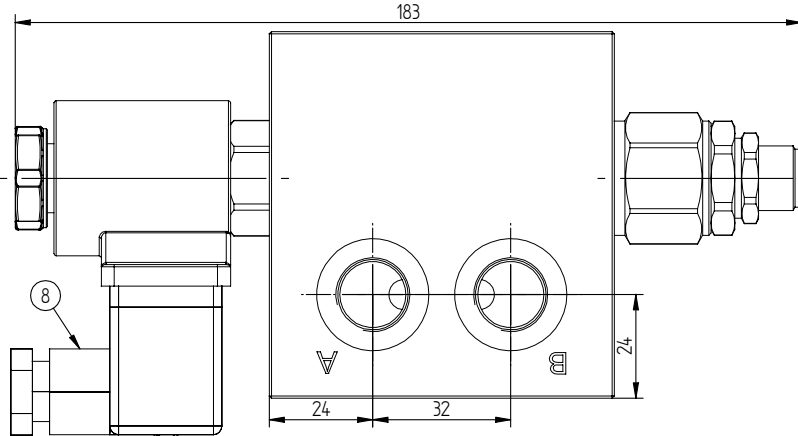
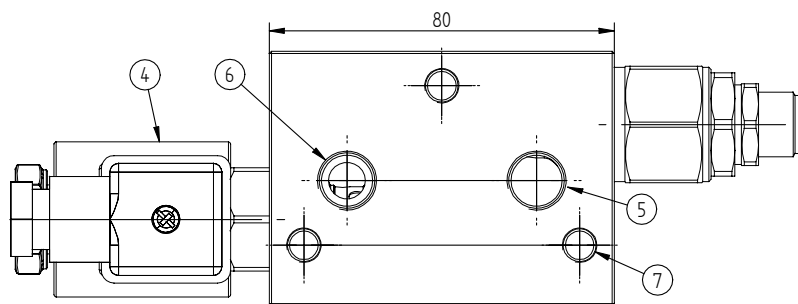
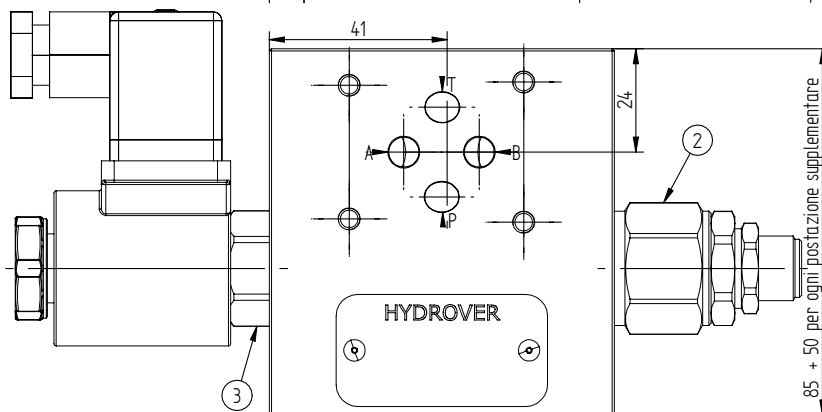
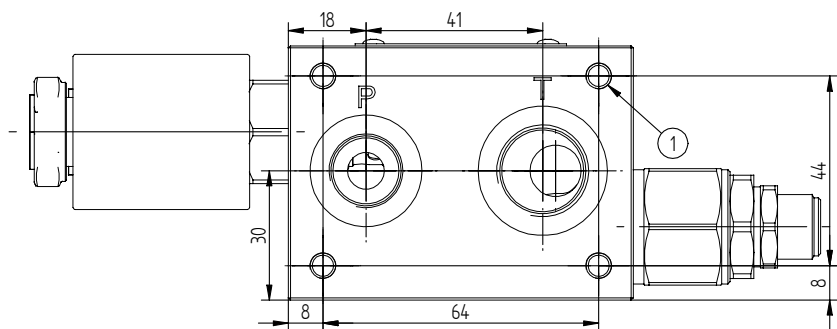
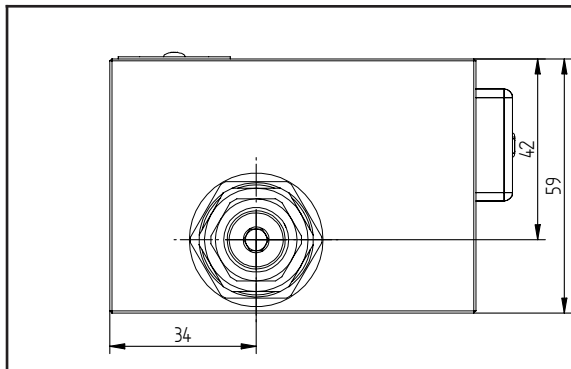


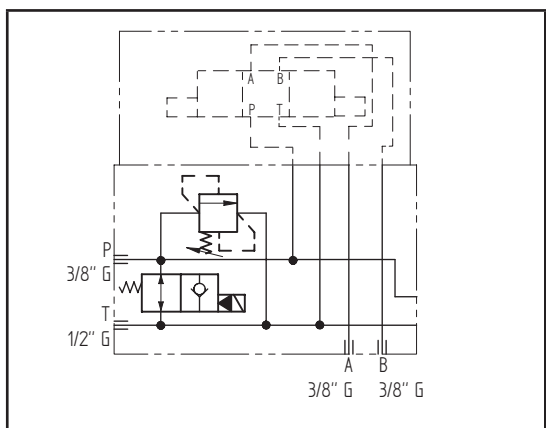
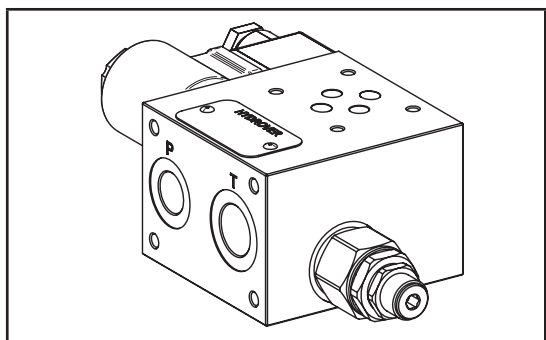
Inlet monoblock subplate from 1 to 4 stations / extensible relief and bypass valve / back A-B ports / crossing P-T ports

H3104



Dimensions in mm

Technical data	
Max. pressure	250 bar
Max. flow	40 lpm *
Weight 1P, 1,5 Kg / 2P, 2,1 Kg / 3P, 2,7 Kg / 4P, 3,3 Kg	
Manifold material	Aluminium
A / B / P ports	3/8" G
T port	1/2" G



N°	Description	Q.ty
1	M6x14 thread for mounting	4
2	Bosch Rexroth relief valve VMD1.040 *	1
3	Bosch Rexroth bypass solenoid valve VEI-16-08A-NA OD.15.06.18-Y-000000 depicted without manual override *	1
4	Bosch Rexroth coil D36 - CLASS H DIN 43650 ISO 4400 *	1
5	Ø 11,5 through hole with 1/4" G thread (T)	1
6	Ø 8,5 through hole with 1/4" G thread (P)	1
7	M8x15 for tie rod	3
8	Connector DIN 43650 ISO 4400	1

* for complete technical information, click on the blue link or go to the components section at the end of the catalogue

Ordering code

H 3 1 0 4 A _ P - _ _ - _ _ - _ _

Hydrover product

Product series

31 series - Modular Cetop 3 subplates for parallel circuits

Product ID

Manifold material

Aluminium

Number of Cetop 3 stations

- 1 station = 1P
- 2 stations = 2P
- 3 stations = 3P
- 4 stations = 4P

Bypass solenoid valve coil connection *
 1 = DIN 43650
 ISO 4400

Solenoid valve coil voltage *

- OB = 12V DC
- OC = 24V DC
- OD = 48V DC
- OU = 110V RAC
- AH = 230V RAC

Bypass solenoid valve manual override *

- E0 = Without
- EP = Push
- EG = Push and twist

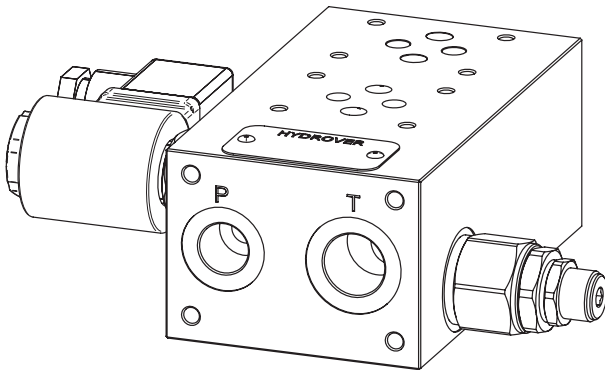
Relief valve adjustment pressure range *

- 1= 25-120 bar
- 2= 40-200 bar
- 3= 200-350 bar

Relief valve adjustment type *

- S = Screw

2 stations configuration (2P)



* Omit if not required. For example, to order the product without the bypass solenoid cartridge valve, omit the coil connection, coil voltage and manual override options: H3104A3P-S2.

The manifold will still be provided with the corresponding cavity.

To inhibit a function, replace the related valve options with TL: eg H3104A2P-S2-TL.

In the cavity it will be mounted a long plug.

Valve	Cavity	Long plug code
Solenoid valve VEI-16-08A-NA OD.15.06.18-Y-000000	CA-08A-2N	0489A2005600000
Pressure relief valve VMD1.040	CA-10A-2N	0489A2008500000

Note: to add stations use the subplates **H3101**, **H3105** and **H3102**.