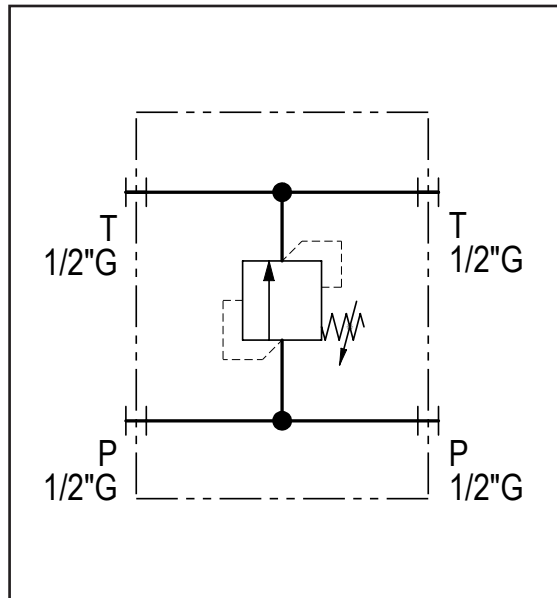
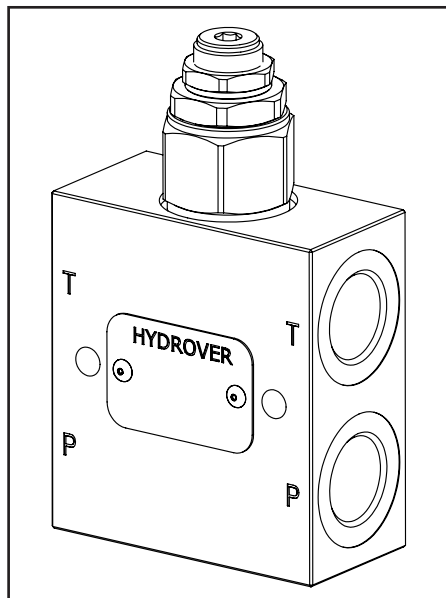
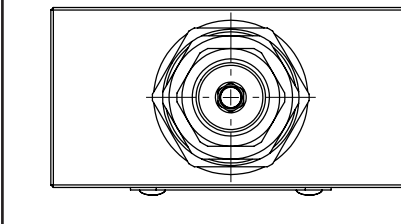


Dimensions in mm

Technical data	
Max. pressure	250 bar
Max. flow	70 lpm *
Weight	0,58 Kg
Manifold material	Aluminium
P / T ports	1/2" G



N°	Description	Q.ty
1	Bosch Rexroth relief valve <b>VMD1.070</b> *	1
2	Ø 6,5 through hole for mounting	2

\* for complete technical information, click on the blue link or go to the components section at the end of the catalogue

Ordering code

H	1	7	1	7	4	A	-	_	_
---	---	---	---	---	---	---	---	---	---

**Hydrover product**

**Product series**

17 series - Inline valves

**Product ID**

**Manifold material**

Aluminium

**Relief valve adjustment pressure range \***

- 0 = 10-60 bar
- 1 = 40-110 bar
- 2 = 110-220 bar
- 3 = 220-260 bar

**Relief valve adjustment type \***

S = Screw

\* Omit if not required. To order the product without the pressure relief cartridge valve, omit the pressure range and the adjustment type options: H17174A.  
The manifold will still be provided with the corresponding cavity.