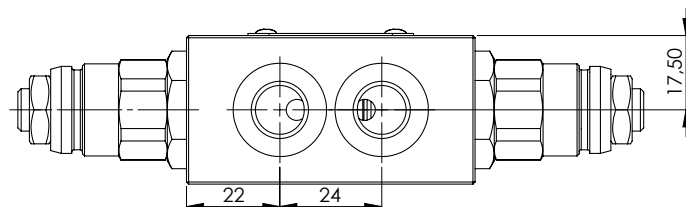
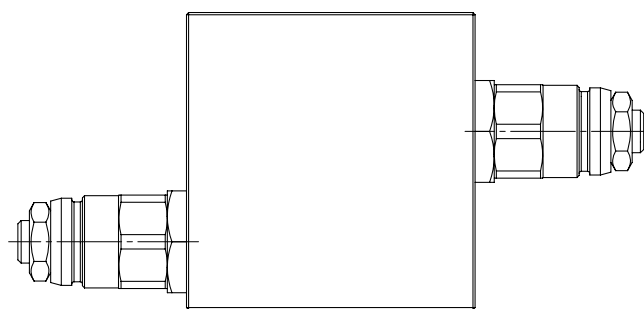
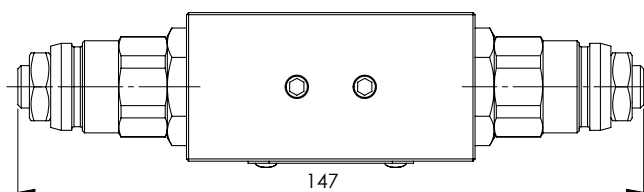
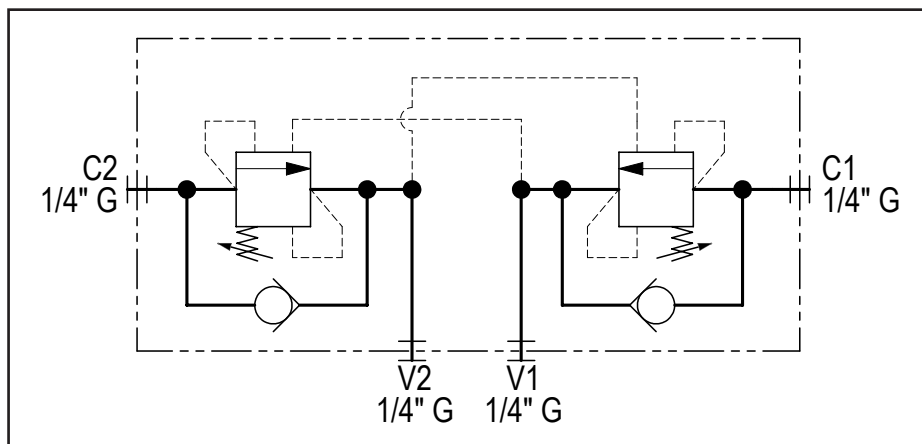
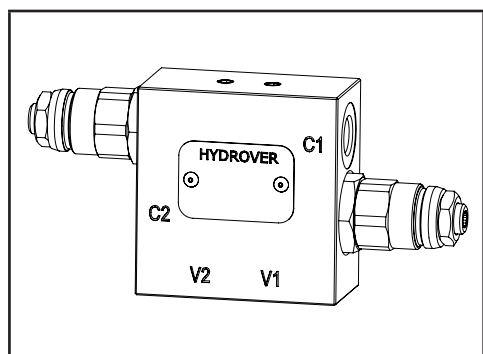


Dimensions in mm



Technical data	
Max. pressure	250 bar
Max. flow	25 lpm *
Pilot ratio	4:1
Weight	0,8 Kg
Manifold material	Aluminium
C1 / C2 / V1 / V2 ports	1/4" G



N°	Description	Q.ty
1	Bosch Rexroth counterbalance valve <b>VBSN-08AA</b> *	2

\* for complete technical information, click on the blue link or go to the components section at the end of the catalogue

Ordering code

H	1	7	0	3	7	A	-	_	_
---	---	---	---	---	---	---	---	---	---

**Hydrover product**

**Product series**

17 series - Inline valves

**Product ID**

**Manifold material**

Aluminium

**Counterbalance valves  
adjustment pressure range \***

2 = 100-210 bar  
3 = 200-350 bar

**Counterbalance valves adjustment type\***

S = Screw

\* Omit if not required. To order the product without the counterbalance cartridge valves, omit the pressure range and the adjustment type options: H17037A.  
The manifold will still be provided with the corresponding cavities.