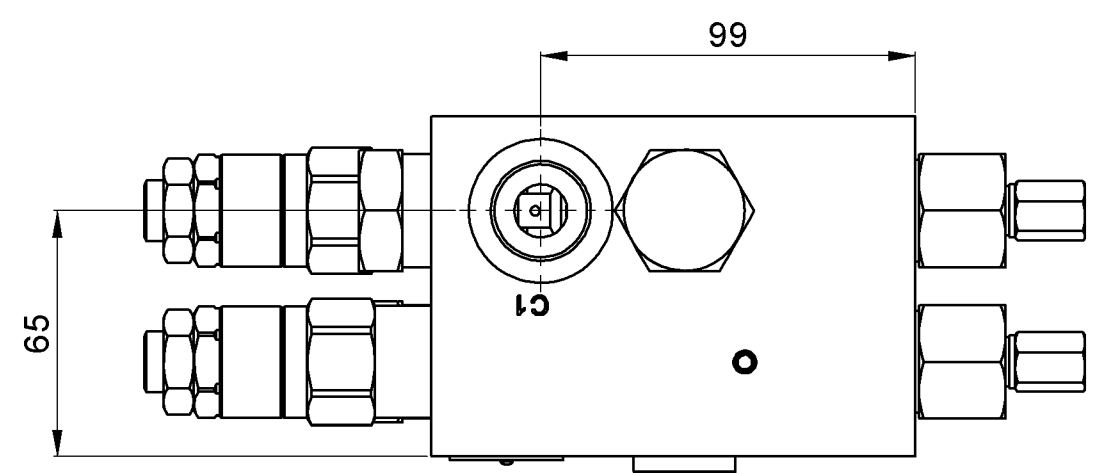
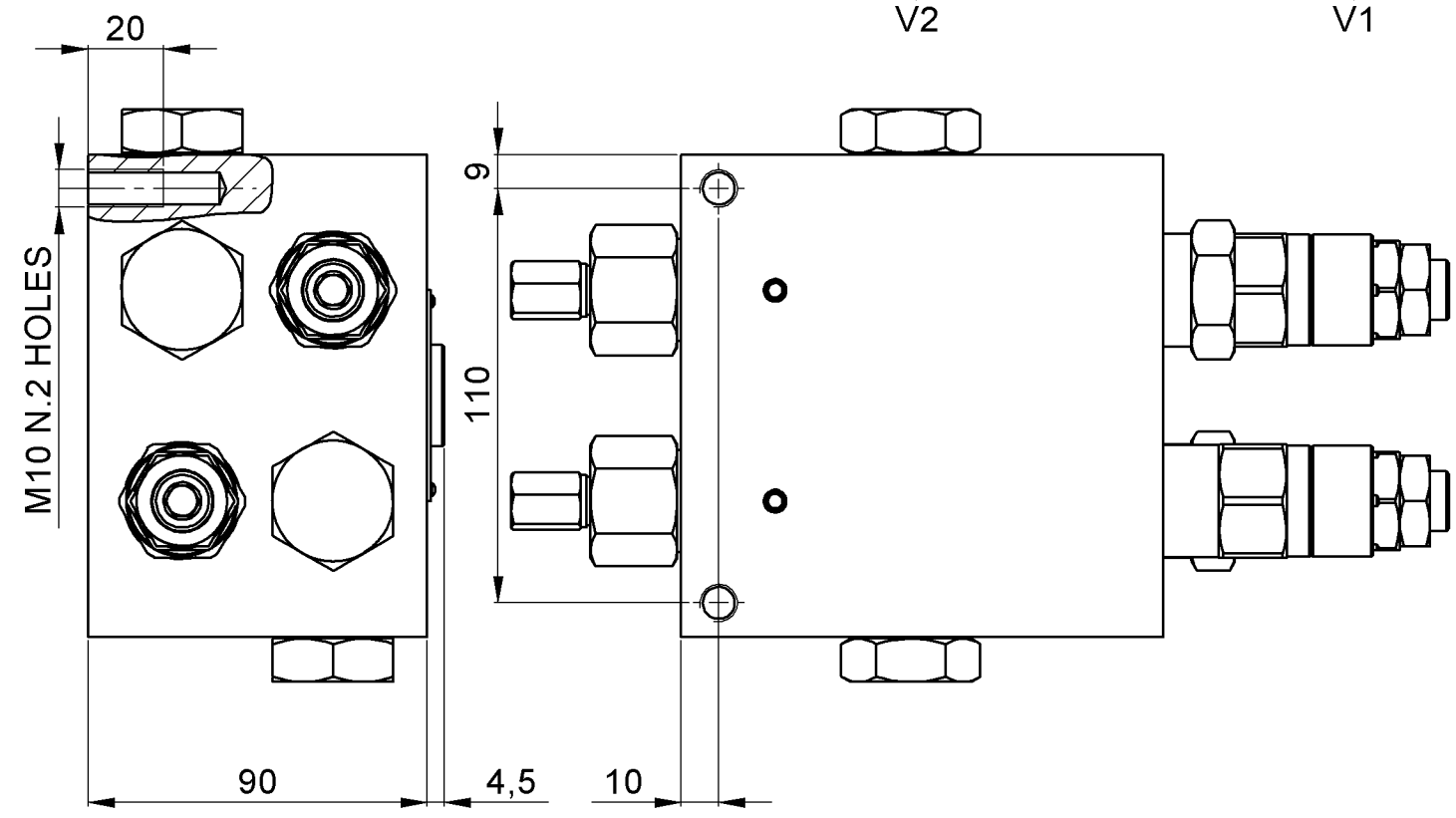
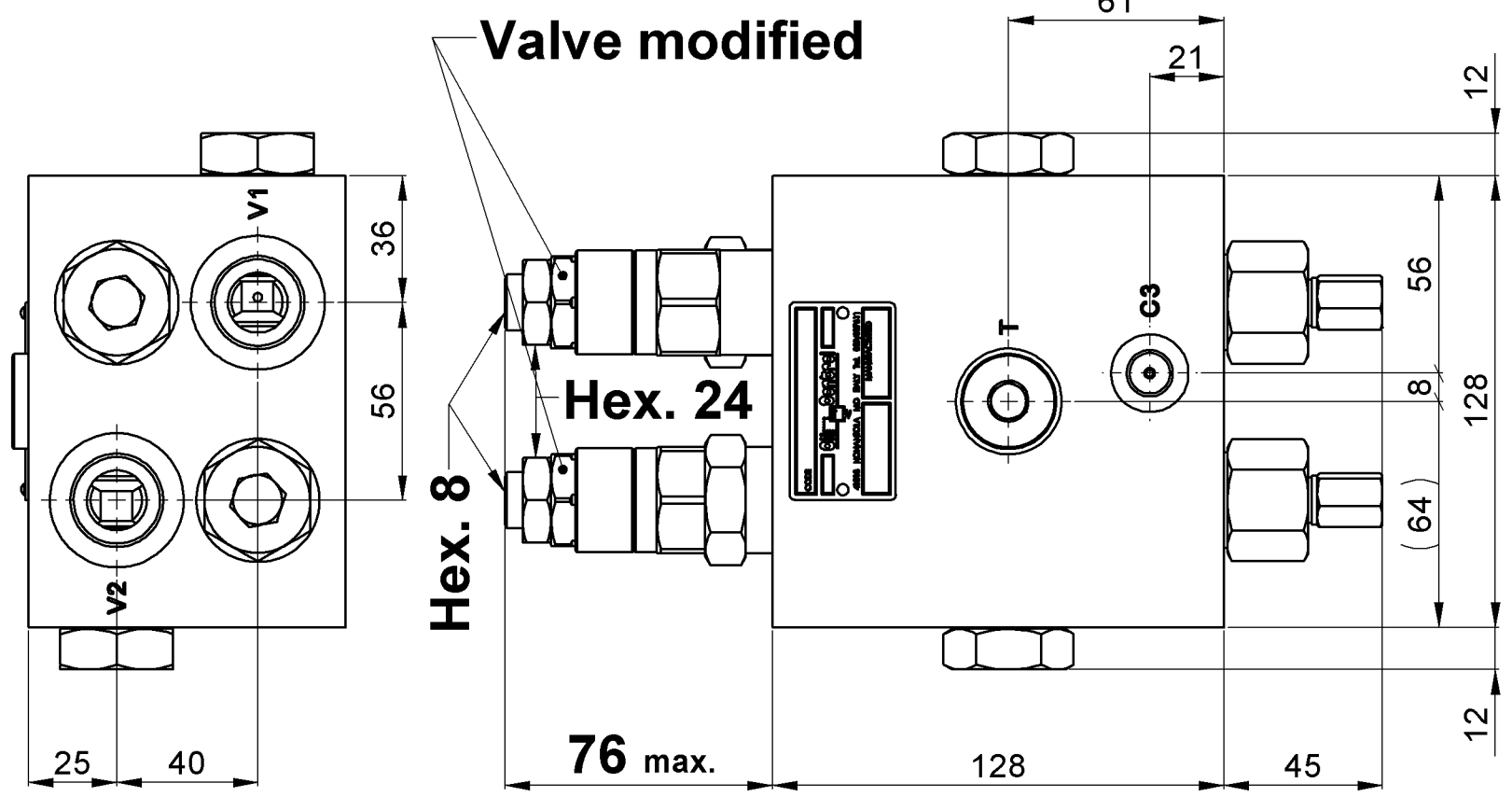
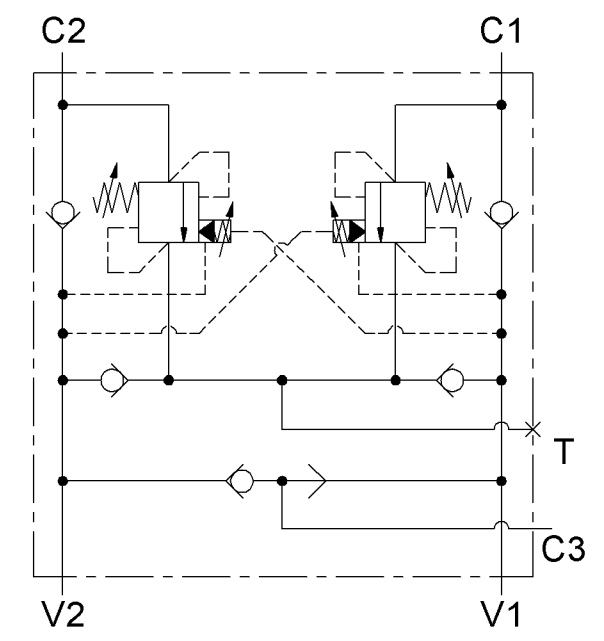


Max. pressure: 350 bar
 Max. flow: 120 l/min

PRESSURE SETTINGS
 200 bar 5 l/min
 90 bar 5 l/min (lower pressure setting)
 Adj. pressure range: 60-210 bar
 Pressure increase: 68 bar/turn
 Pilot ratio: 3:1

Port size:
 V1-V2-C1-C2 = G 3/4 ISO 1179-1
 C3 = G 1/4 ISO 1179-1
 T = G 1/2 ISO 1179-1

Manifold: aluminium.



For dimensions without tolerance, consider ±0.5 mm

All dimensions : mm

Denominazione / Denomination		VAABSICN150PDRMV34201:3B		Rexroth Bosch Group	
Specifiche / Specifications	-			Ufficio Tecnico / Technical Dep. DC-MA/ECM	
	-			Gerarchia Prodotto / Product Hierarchy 876220600	
	-			Kit guarniz. / Seal kit -	
Massa / Mass (kg)	5,700	Cliente e codice articolo / Customer and article code		-	Modifiche / Changes
Richiesta / Request	UT11950	Num. schema idraulico / Hydraulic scheme no.		-	Sostituisce il / Replaces 05714710042000A
Tipo cavità / Cavity type	A3	Studio di riferimento / Reference study		-	Codice Code 05714710042000B
Disegnato / Designed by Ferraresi		Data / Date 06/04/12		Material number R930006949	
Verificato / Checked by Ortiz		Scala / Scale 1:2			
<small>Disegno di proprietà BOSCH REXROTH OIL CONTROL S.p.A. tutelato ai termini di legge. E' vietata la riproduzione e la diffusione non autorizzata. This drawing is a property of BOSCH REXROTH OIL CONTROL S.p.A. protected according to the laws. Unauthorized reproduction and distribution is strictly prohibited.</small>					
Direttorio del file Cad / Cad file directory K:\Design\Cad 3D\Ingombri\05714710042000B					