

**TECHNICAL DATA**

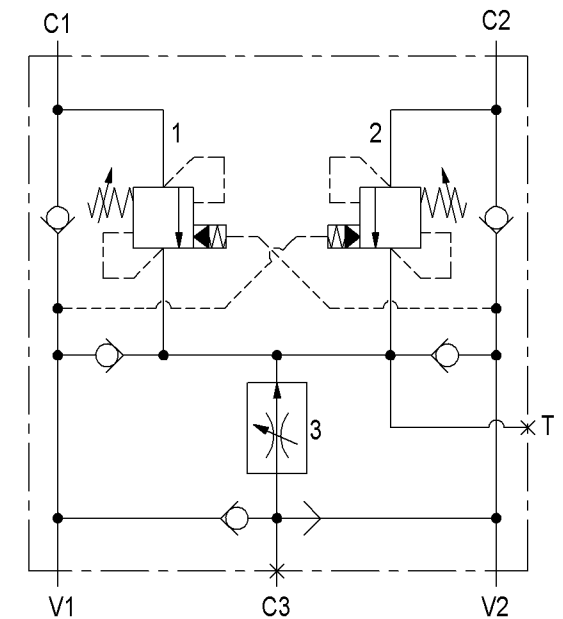
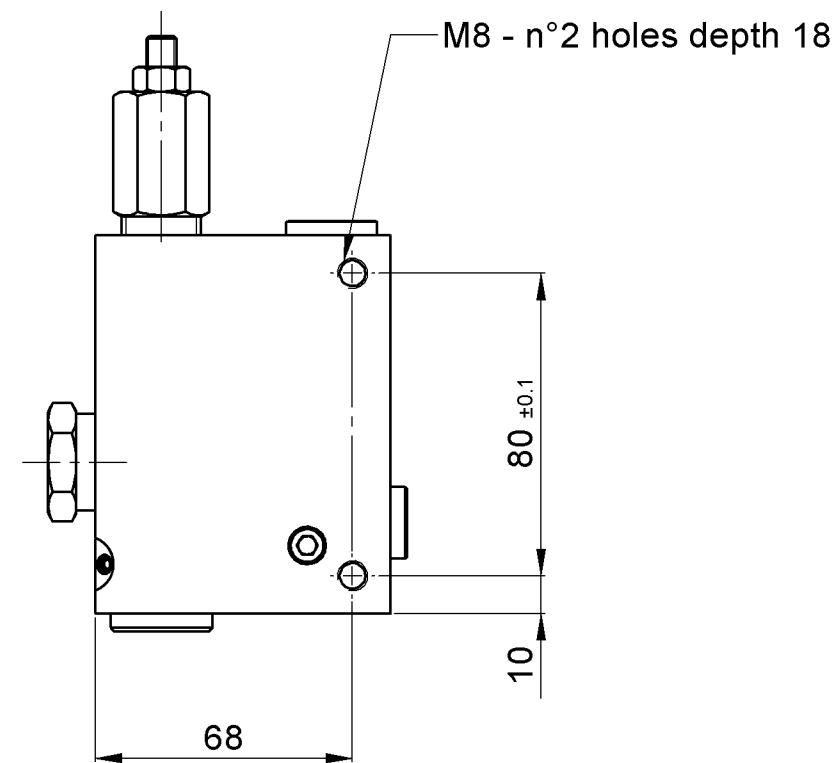
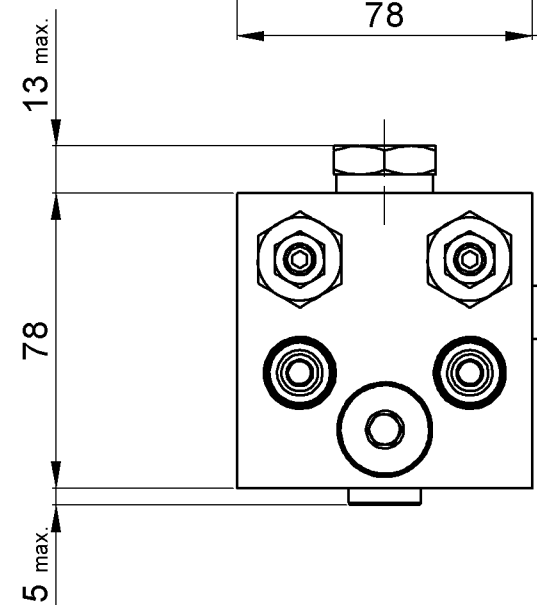
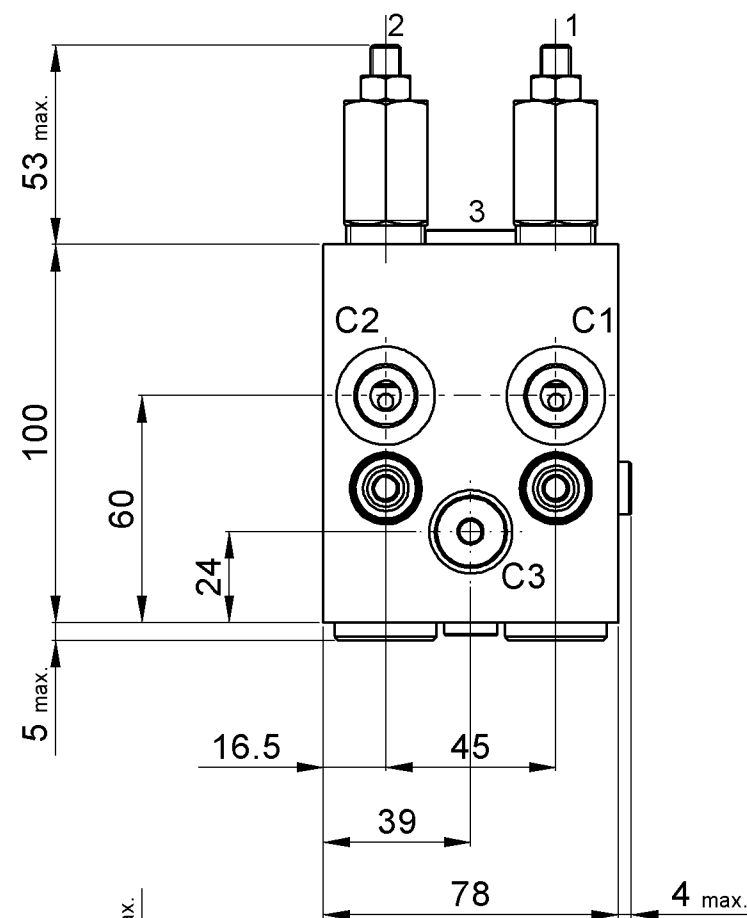
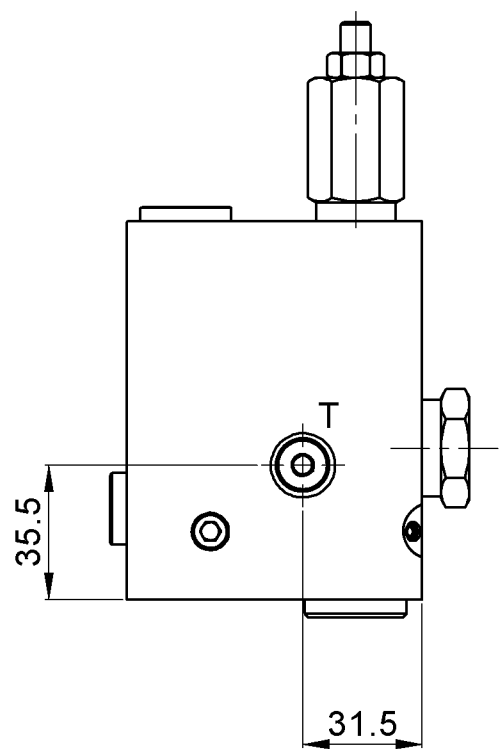
Operating pressure up to : 210 bar  
 Max flow : 40 l/min.  
 Pressure setting valve 1 - 2 : 150 bar at 5 l/min.  
 Manifold : anodized aluminium body

**PORT SIZE :**

C1 - C2 - V1 - V2 : G3/8"

C3 : G1/4"

T : G1/8"



**R930002504** For dimensions without tolerance, consider ±0.5 mm - All dimensions : mm

DENOMINAZIONE <b>VAA-B-SI-RFE-38-20-1:2</b>							
SPECIFICHE Max working pressure 210 bar - Max flow 40 l/min - Pilot ratio 2:1							
DISEGNATO CAD 3D <b>Vagnoli</b>	VERIFICATO <b>Pellicari</b>	DATA <b>23/09/08</b>	SCALA <b>1:2</b>	RNP -	Num. schema idraulico -	SOSTITUISCE IL - SOSTITUITO DAL - CODICE <b>057122390220000</b>	
FILE PRIMA APPARTENENZA K:\DESIGN \ CAD 3D \ INGOMBRI \ 057122390220000							