

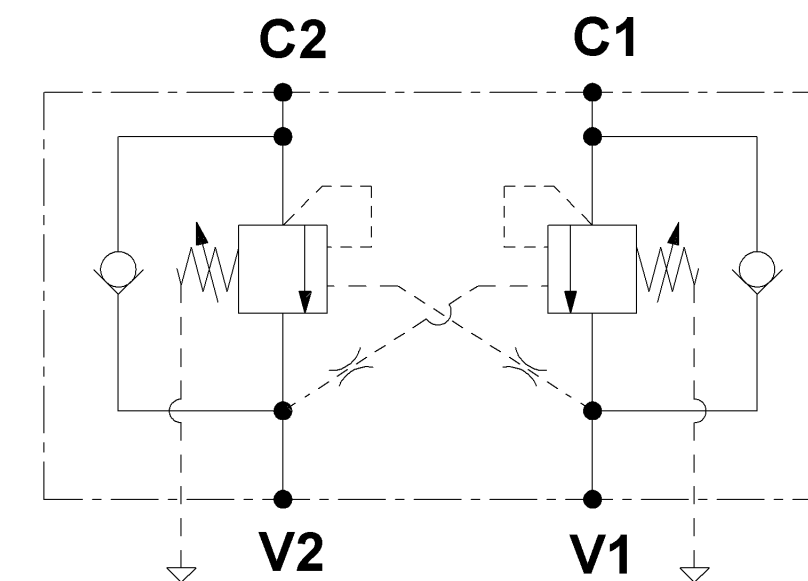
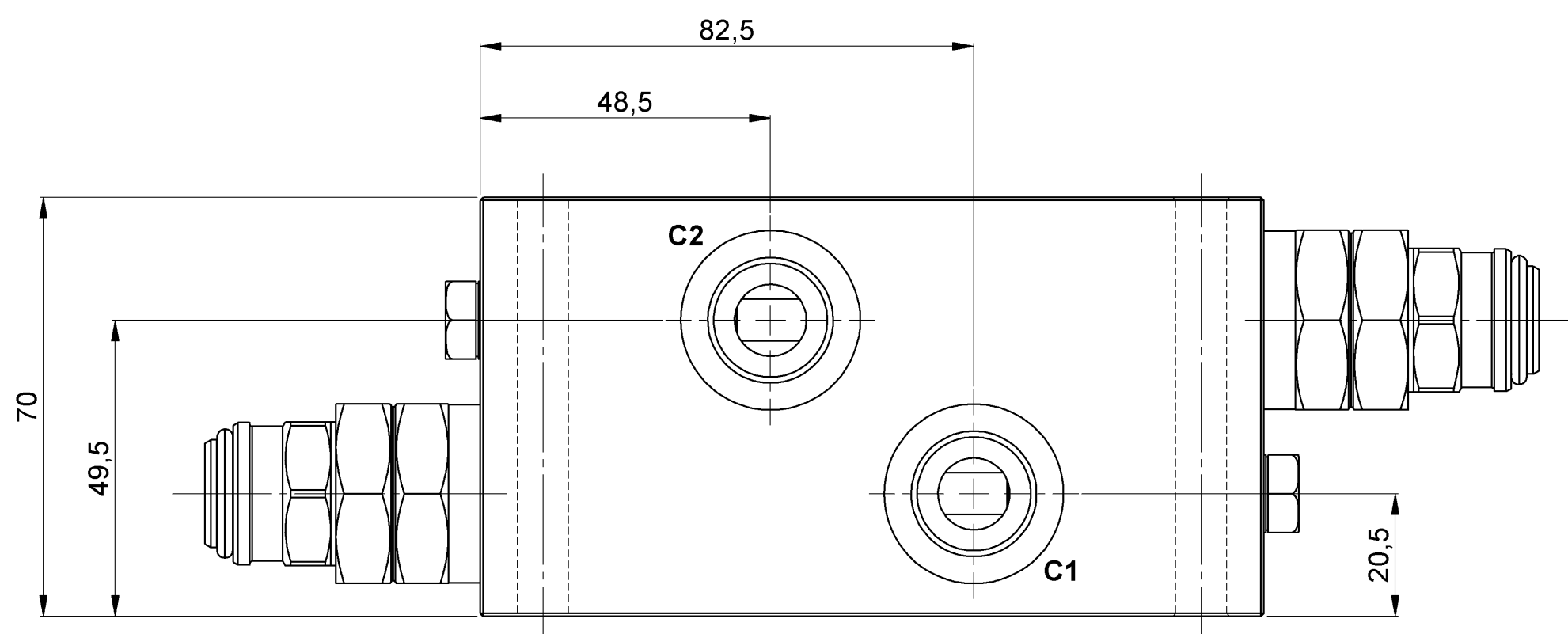
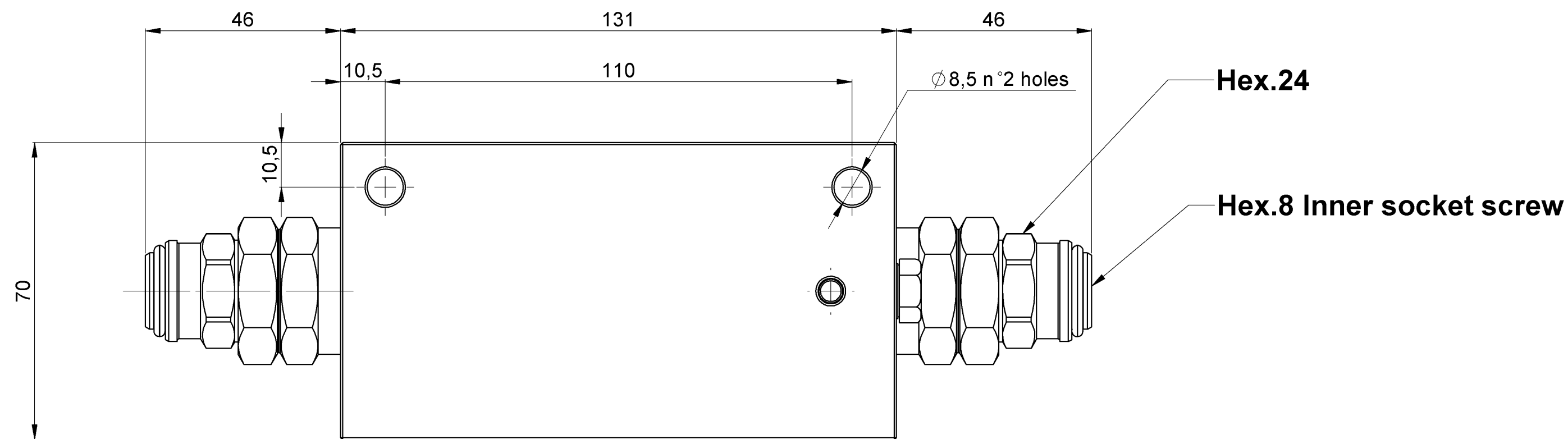
Max.working pressure : 350 bar
Flow.max : 150 l/min

Pressure setting:at least 1,3 times
the load induced pressure

Pilot ratio: 4:1

Port size:V1-V2-C1-C2 : G1/2

Adj.pressure range : 100-350 bar
Pressure increase : 110 bar/turn
Pressure setting : 350 bar(Q=5 l/min.)



For dimensions without tolerance, consider ± 0.5 mm

All dimensions : mm

Denominazione / Denomination VBSO-DE-33-CCAP-PL12-35-C		Rexroth Bosch Group	
Specifiche / Specifications		Bosch Rexroth Oil Control S.p.A.	
-		Ufficio Tecnico / Technical Dep. DC-MA/ENG14	
-		Gerarchia Prodotto / Product Hierarchy 876210611	
-		-	
Massa / Mass (kg)	2,200	Cliente e codice articolo / Customer and article code	-
Richiesta / Request	UT599	Num. schema idraulico / Hydraulic scheme no.	-
Tipo cavità / Cavity type	A2	Studio di riferimento / Reference study	-
Disegnato / Designed by Rebecchi		Data / Date	22/06/12
Verificato / Checked by Rebecchi		Scala / Scale	1:1
Direttorio del file Cad / Cad file directory K:\Design\Cad 3D\Ingombri\05443003033500C		Code Code	05443003033500C
		Material number	R930062646