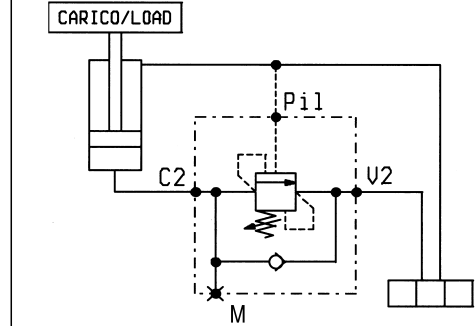
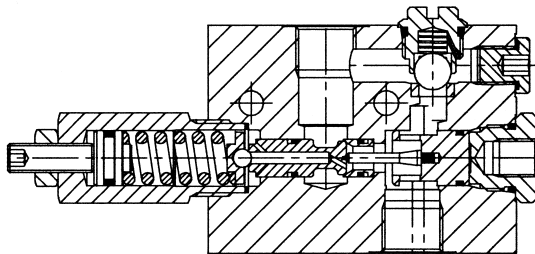
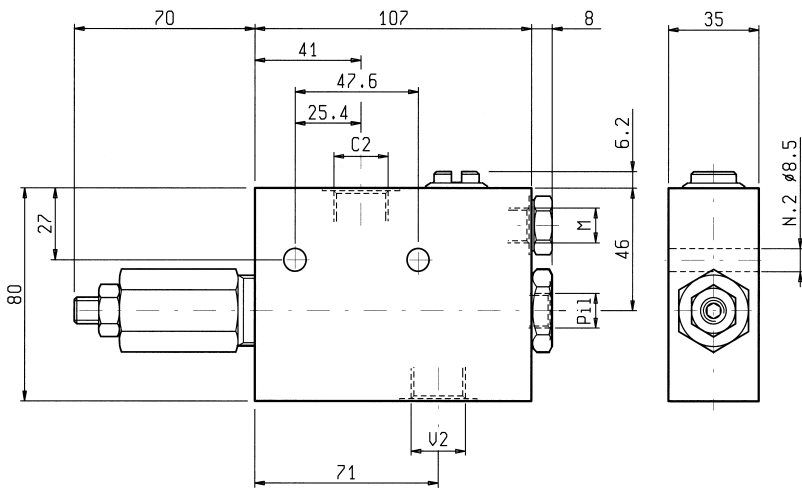


VBSO-SE-NBA

05.43.01 - X - Y - Z



DATI TECNICI / TECHNICAL DATA

Pressione max. 350 bar
 Max. pressure

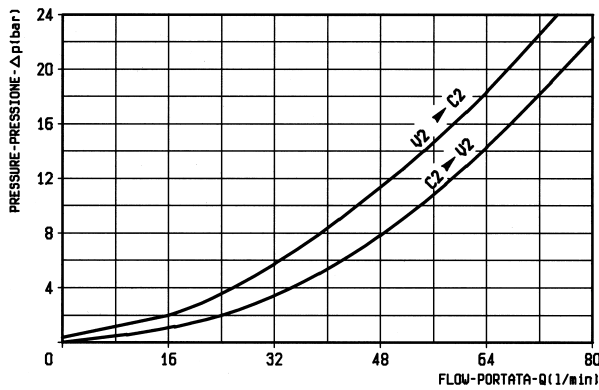
Portata max. 70 l/min
 Flow max.

Taratura della valvola: almeno 1.3 volte superiore alla pressione indotta dal carico

Pressure setting: at least 1.3 times the load induced pressure

Cappellotto per piombatura Codice/Ordering code
 Sealing Cap 03.05.01.001

Peso 1.05 kg
 Weight



X RAPPORTO DI PILOTAGGIO PILOT RATIO

03 10.5 : 1

10 3 : 1

MOLLE / SPRINGS

| Z | MOLLE / SPRINGS | | | | |
|----|---|---|---|-----------------------------------|------------------|
| | Campo taratura min - max bar Adj. press. range bar | Incremento press. bar / giro vite Press. increase bar / turn | Taratura standard bar (Q = 5 l/min) Std. setting bar (Q = 5 l/min) | Cod. ordinazione Ordering code | Colore Colour |
| 20 | 60-210 | 68 | 200 | 03.51.01.152 | verde green |
| 35 | 100-350 | 105 | 350 | 03.51.01.142 | giallo yellow |

Y ATTACCHI / PORT SIZE

| Y | ATTACCHI / PORT SIZE | |
|----|----------------------|-------|
| | V2-C2 | PIL-M |
| 03 | G 1/2 | G 1/4 |