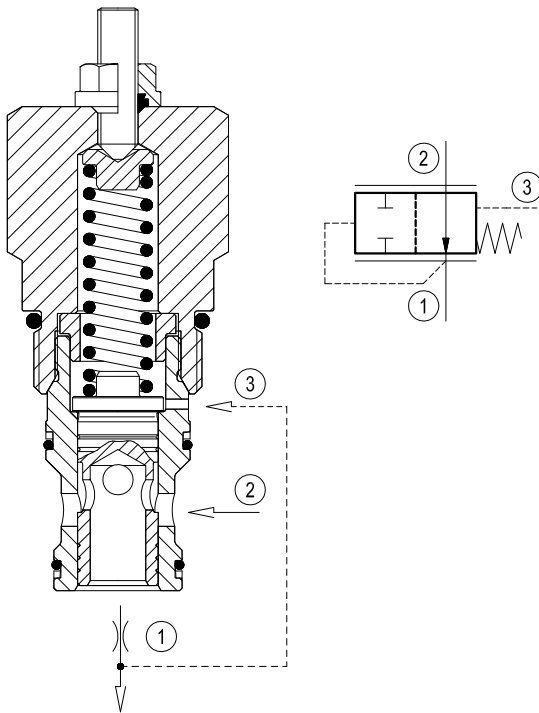


Logic element, flow control with external pilot

Common cavity, Size 16

VLSC-16A

04.84.02 - X - 27 - Z



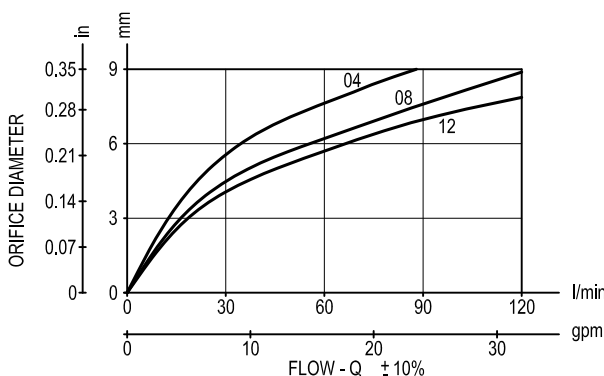
Description

When pressure at 1 rises above the selected spring bias pressure against the spool, the valve shifts to block flow from 2 to 1. Pilot pressure at 3 is additive to the spring bias pressure. The valve may be used in switching or compensation type applications, and will maintain a constant pressure drop across a fixed (or variable) orifice downstream of 1 when installed and piloted per the diagram above.

Technical data

Max. operating pressure	bar (psi)	350 (5000)
Max. flow	l/min. (gpm)	120 (32)
Max. internal leakage (*)	cm ³ /min. (cu.in./min.)	200 (12)
Fluid temperature range	°C (°F)	-30 to 100 (-22 to 212)
Installation torque	Nm (ft-lbs)	108-122 (80-90)
Weight (**)	kg (lbs)	0.35 (0.77)
Cavity		CA-16A-3C see data sheet RE 18325-70
Seal kit (***)	code material no.	RG16A9010520100 R901111388
Fluids		Mineral-based or synthetics with lubricating properties at viscosities of 10 to 500 mm ² /s (cSt)
Filtration		Nominal value max. 10µm (NAS 8) ISO 4406 19/17/14
Installation		No restrictions
Other Technical Data		See data sheet RE 18350-50

Performance

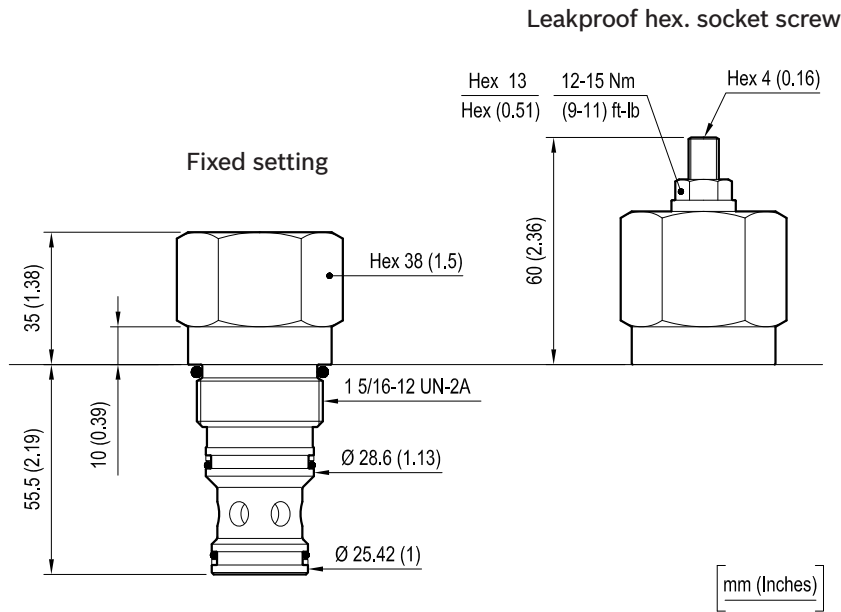


(*) Measured at 200 bar (2900 psi)

(**) Standard version X=00 type

(***) Only external seals for 10 valves

Dimensions



Ordering code

04.84.02	X	27	Z	00	*
----------	---	----	---	----	---

Logic element, flow control with external pilot

Adjustments

= 00 Fixed setting

= 03 Leakproof hex. socket screw

Common cavity, Size 16

Series 0/A to L
unchanged performances and dimensions

Version and options standard

		SPRINGS		
		Standard setting bar (psi)	Pres. increase bar/turn (psi/turn)	Bias spring bar (psi)
for X=00	= 04	-	-	4.5 (65) ±20%
	= 08	-	-	8 (115) ±15%
	= 12	-	-	12.5 (180) ±15%
for X=03	= 00	4 (60)	1.5 (22)	4-12.5 (60-180)

Note: Special settings available. Contact factory authorized representative for ordering code

Type	Material number
04840200270400A	R901109376
04840200270800A	R901109377
04840200271200A	R901077638
04840203270000A	R901109379

Type	Material number